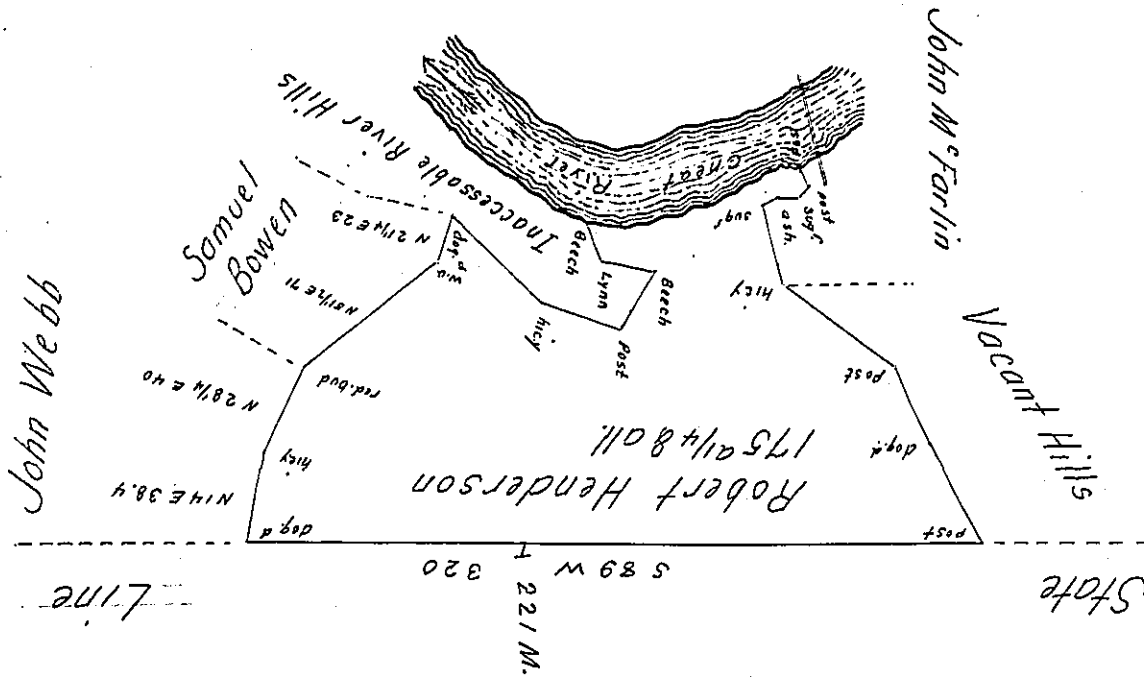


S 45 E 52
 S 73 E 36
 N 28 1/2 E 30
 N 81 W 24
 N 28 W 16 to River
 N 83 E 35
 N 66 E 62.5
 S 20 E 5- from River
 S 49 1/2 W 7.2
 S 82 W 10.2
 S 65 1/2 W 8.4
 S 77 E 36
 S 55 1/2 E 59
 S 25 1/2 E 33.6
 S 36 1/2 E 52 post
 in State Line



Situate between the State Line and Cheat River below McFarlin's ford in Spring Hill Township Fayette County and Surveyed the 19th day of November 1791 In pursuance of a Warrant Dated the 29th Day of December 1786.

p. Alexander McClean, Deputy -
 To Daniel Brodhead Esquire
 Surveyor General

IN TESTIMONY that the above is a copy of the original remaining on file in the Department of Internal Affairs of Pennsylvania, made conformably to an Act of Assembly approved the 16th day of February, 1833, I have hereunto set my Hand and caused the Seal of said Department to be affixed at Harrisburg, this thirtieth day of March 1905.

Isaac R. Brown
 Secretary of Internal Affairs.